



***Discover  
your potential***



"Leaders and governors foster a culture of ambition for all students."

*Ofsted Outstanding (March 2023)*

## **Thank you for your interest in Melton Vale Sixth Form College.**

It is my privilege to have taken on the role of Head Teacher in April 2023.

If you choose to come to MV16, you really will have the best of all worlds. As sixth form specialists, you will have teachers who are experts in their courses and who will pass on their passion and love for their subject to you.

As a college, we act as an excellent half-way house between school and university or employment. We treat you as adults and provide you with an environment that gives you the freedom to be yourself, but we also provide the support and structure that you need to flourish and develop. As a small college, we provide a warm and friendly community where staff get to know you and can tailor their support and advice accordingly.

Having worked in the sixth form college sector for 17 years, at an outstanding Sixth Form College in Cambridge, I am passionate about sixth form education.

My role is an honour; we have two brief years to walk beside you as you explore your sense of self and your future aspirations and it is my responsibility to ensure that we open your eyes to more than you may have thought possible in terms of your dreams and your goals.

I hope you allow us to invest in you and I look forward to welcoming you to MV16.

**Dr Nicki Dartnell**  
Head Teacher



# Why MV16 is outstanding

In March 2023, we welcomed Ofsted into the college and we were delighted to be rated 'Outstanding' in all areas.

We are extremely proud of the feedback we have received. Opposite is a selection of statements from Ofsted's report.

"Teachers provide an excellent education that enables students to progress on to high-quality destinations."

**Ofsted Outstanding (March 2023)**

  
**Ofsted**  
Outstanding  
Provider

## The curriculum

"Leaders have developed a broad and varied personal development curriculum. Students have access to a wide range of enrichment activities related to their progression aims."



## Teaching and learning

"Teachers are highly skilled practitioners. They have extensive levels of subject knowledge, which they use well."



## MV students

"Students are proud to study at MV. They rightly value the calm and purposeful atmosphere at the college and enjoy the freedoms that the sixth-form experience offers."



## Wellbeing

"Students appreciate how effectively staff oversee and support their wellbeing."



"MV is such a friendly college and the supportive atmosphere helps me to push myself to the best of my ability."

**Hattie (Student)**

## What's it like to study at MV?

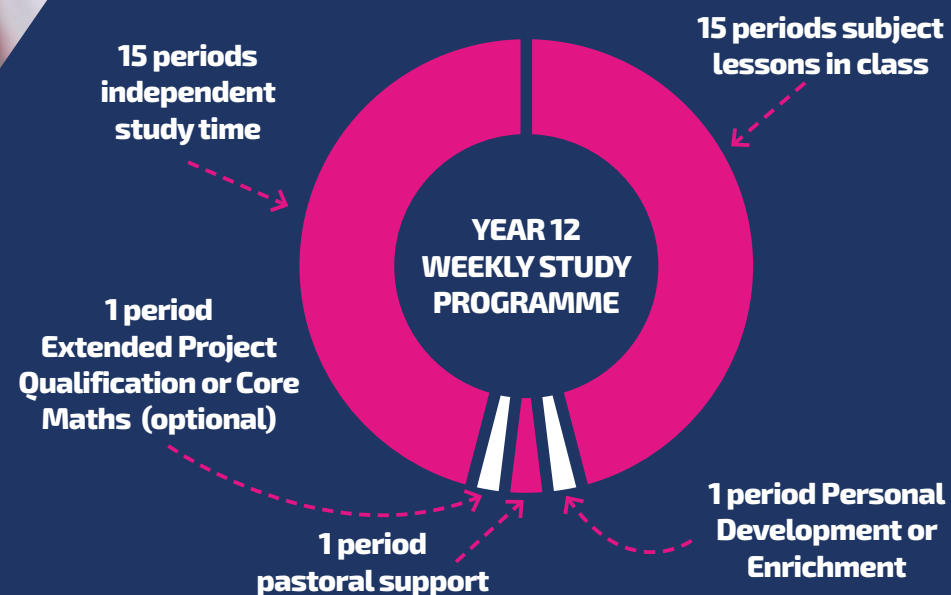
Studying at MV gives you the best of all worlds.

As a sixth form college, we provide an adult environment in which we prepare you for your onward progression, but as a small sixth form college we get to know you really well so we can tailor your experience to fit your goals and you as a person.

We offer the biggest range of A-Level subjects in the area, supplemented by some selected BTEC qualifications that complement our A-Level offering. New for 2024 we are introducing **Environmental Science A-Level**.

Lessons run from 9:00am to 3:25pm. If you haven't got a lesson, we have plenty of study space for you to use, or you can choose to be off campus if you wish.

Your subjects are your core qualifications and you will have five periods of these a week, and these are combined with other personal development and enrichment activities that you opt for that gives you a unique timetable that is tailored to you and your progression plans.





# Ask the students...



## Ethan

### Which school did you come from?

John Ferneley College.

### What subjects are you taking?

History, Media and Politics.

### What else do you get involved with at MV?

I am in the Debate Club, this has really helped develop my confidence, so much so that I was interviewed by the BBC Sunday Politics TV show. I took part in the Rutland and Melton Debate competition at the Houses of Parliament where we were successful in reaching the final rounds!

### Why did you choose MV?

My older brother came here and had a wonderful experience. When I came to the open day I knew this was the perfect place for me to study further education, with its modern environment, accessible location and freedom to be independent. I have great relationships with the teachers, they all have a wealth of expertise.



## Fran

### Which school did you come from?

I went to Grove Primary school before moving on to John Ferneley College for secondary education, both local schools.

### What subjects are you taking?

Politics, Applied Science and Psychology. I plan to go to university and train to become a Primary School teacher.

### What else do you get involved with at MV?

I sing at the open mic events, everyone is encouraged to have a go and our fellow students enjoy a chance to relax and have some fun!

### Why did you choose MV?

I love the independence which is well balanced with the support of subject specialists and form tutors. It's easy to travel to and the careers support is first class.



## Ali

### Which school did you come from?

Fulhurst Community College.

### What subjects are you taking?

Biology, Chemistry and Maths.

### What else do you get involved with at MV?

7up and the MV Medical Society.

### Why did you choose MV?

The location and broad range of subjects on offer. The support from the Year 13 mentors has been great as an added extra on top of the support from my teachers. I hope to pursue a career in medicine, and I have had the opportunity to undertake work experience at the Leicester Royal Infirmary. Students at MV receive amazing career advice.



## Gabi

### Which school did you come from?

Belvoir High.

### What subjects are you taking?

Media, Politics and Sociology.

### What else do you get involved with at MV?

I am in the Student Union and part of the Interact group. We work as a team to support charities, raise awareness of causes and organise fundraising activities.

### Why did you choose MV?

There are so many opportunities beyond the classroom at MV. It is in a great location which is easy to get to by bus from the rural outskirts of town.

## Toby

### Which school did you come from?

Catmose in Rutland.

### What subjects are you taking?

Politics, History and Business.

### What else do you get involved with at MV?

Debating society where we cover a range of current affairs. I have also had the opportunity to tour the Houses of Parliament.

### Why did you choose MV?

Melton Vale has good transport links so getting here from out of town is very easy. The Learning Development team support us to develop independent study programmes outside of lessons and oversee student wellbeing. Students are given freedom and the adults have trust in us to make smart choices and balance our time well.



## Henry

### Which school did you come from?

Catmose in Rutland.

### What subjects are you taking?

Business, English and Media Studies.

### What else do you get involved with at MV?

In addition to my studies I have attended meetings of the Student Council at MV16.

### Why did you choose MV?

I've developed and grown in confidence since starting here. I came on my own but have made amazing friends, everyone is so approachable.



"I love the bright and positive atmosphere at MV."

**Danny (Student)**

## Social Sciences

The scientific study of human society and social relationships.

Social scientists study how societies work, exploring everything from the triggers of economic growth and the causes of unemployment to what makes people happy. Subjects studied will develop your communication and critical thinking skills, both vital for today's employer market.

Subjects you can study in the Social Sciences:

- **A-Level Psychology**
- **A-Level Sociology**
- **Applied Diploma in Criminology**
- **BTEC Health and Social Care**
- **BTEC Psychology**

### Case Study

Mikahil Azad (Class of 2016)

Attended MV in 2014–16 studying Psychology and BTEC Sport, and then on to Birmingham City University.

Today, Mikahil is a Visiting/Associate Lecturer in Criminology and PhD Researcher at Arden University.

Mikahil's top tip: **"Do what you love, the rest will follow."**





# Humanities

The study of subjects such as geography and history.

Humanities subjects take real world global issues and study the impact on society and what we might have learnt along the way.

You will have ample opportunity within the Humanities to debate and discuss controversial issues and will develop your communication skills as a result, alongside many others.

Subjects you can study at MV:

- A-Level Business
- A-Level Economics
- A-Level Geography
- A-Level History
- A-Level Politics



## Case Study

### James Roberts (Class of 2021)

Studied Business, Economics and French at MV before moving to London School of Economics, achieving a BSc in Language, Culture and Society (Mandarin speciality).

James says: **"Trust the process and don't change yourself for anyone or anything. If you're true to yourself, you will be happier eventually."**



"What I like about MV is that there are facilities that cater to all students' educational needs."

**Dylan (Student)**



# STEM

The systematic study of the structure and behaviour of the physical and natural world through observation, experimentation, and the testing of theories against the evidence obtained.

Studying a science give you valuable critical thinking skills and help to build creativity that can lead to new innovations, alongside developing problem solving skills. The skills learned during your STEM study have real world application and can be useful in any field of work.

Subjects you can study at MV:

- **A-Level Biology**
- **A-Level Chemistry**
- **A-Level Computer Science**
- **A-Level Environmental Science** (new for 2024)
- **A-Level Further Mathematics**
- **A-Level Mathematics**
- **A-Level PE**
- **A-Level Physics**
- **A-Level Product Design**
- **Level 3 Mathematics** (this can be taken as an additional course)
- **BTEC Engineering**



## Case Study

### Geraldine Kirk (Class of 2021)

Came to MV in 2019 to study Biology, Chemistry and Maths and is now currently studying Veterinary Science and Surgery at the University of Nottingham.

Advice from Geraldine: **"Don't panic and try your best. You can do it!"**

# Creative Arts

A diverse range of human activity, and resulting product, that involves creative or imaginative talent expressive of technical proficiency, beauty, emotional power, or conceptual ideas.

Come and join the region's most successful, exciting and ambitious creative arts department. With a wide range of disciplines on offer, you will arrive as a student and leave as an artist and or designer.. On average 80% of our creative arts cohort continue their creative journey in higher education or employment. We have alumni across the length and breadth of the UK from Central Saints Martins in London, to The Glasgow School of Art.

Did you know 93% of 16–18-year-olds say studying a creative subject impacts positively on their mental health and well-being and the creative industry makes a staggering contribution of nearly £13 million to the national economy every hour!

Creative subjects you can study at MV:

- A-Level Art
- A-Level Drama and Theatre\*
- A-Level Graphics
- A-Level Photography
- A-Level Textiles



## Case Study

### Oliver Roberts (Class of 2021)

Entered MV to study Art, Textiles and Theatre Studies in 2019.

Graduated from MV in 2021 and moved on to Central Saint Martins (University of the Arts London) to begin a degree in Textile Design.

Tips from Oliver: **"Be fluid. Go with the flow. Enjoy everything."**



"The MV environment fosters independent working and time management. With the support on offer, this sets students up well for post-18 plans."

**Eve (Student)**



# Communications

The study of languages and their influence on culture.

These are academic courses with ambitious and varied contents, which will develop students' general cultural understanding, self-confidence and intellectual curiosity of language within a wide range of contexts. The subjects open doors to all progression pathways, including medicine and law.

Subjects you can study at MV:

- A-Level English Language and Literature
- A-Level English Literature
- A-Level French
- A-Level Media Studies
- A-Level Spanish



## Case Study

### George Icke (Class of 2021)

Studied English, Media and Geography at MV, followed by a BA in Broadcast Journalism at the University of Salford.

George now works as a National Newsreader and Reporter for Radio News Hub, and also as a freelance journalist.

George's advice to you: **"Don't panic if you don't know exactly what you want to do — you are in the majority, not the minority."**



# Life beyond lessons

Discover your passion.

Education at post-16 is about more than passing qualifications.

Our goal is to prepare you for higher education or employment by providing you with a host of extra-curricular opportunities throughout your two years with us. In doing so, we support you to develop critical and creative thinking skills, whilst developing you as an effective independent learner.

Just a sample of the opportunities on offer include:

- **Netball**
- **Basketball**
- **Football**
- **Chess and backgammon clubs**
- **Environment group**
- **Creative crafts**
- **Women's group**
- **Classics club**
- **Debating club**
- **Table tennis**
- **Interact**
- **Brain food**
- **University Challenge quizzes**
- **Volunteering**
- **Inclusivity forum**
- **Eco-school ambassador**
- **Volleyball**
- **Creatives club**
- **Maths club and Senior Maths challenge**





# Student Union

The college has an active Student Union who organise events for the students. They have their own office on the Ground Floor and link up to tutor groups through form reps, who have an opportunity to attend a student union forum once a half-term.

Form reps take on a remit for either the environment or inclusivity. Both are extremely important areas within the college and we have just signed up to apply for the EcoSchool Award, with the student council spearheading the application.



# Extended Project Qualification (EPQ)

Whilst at MV, you will have the option to take up an EPQ qualification. This qualification allows you to gain real independence and maturity whilst opting to pursue a topic of your choosing. From developing skills in CAD software to design new products, to investigating what makes a criminal and everything in between, the project is personal to you and your interests.

It presents a fantastic opportunity to stand out from the crowd and to develop a new skill or talent. The bonus is that it is equivalent to half an A-Level (A\* can be achieved) and many universities now give alternative, lower offers to those students that complete an EPQ.

Universities know that the project provides evidence that the transition from college to university will be a smooth one as students will already possess many of the skills needed to flourish.

Within our staff team we have extensive expertise at supporting students with the qualification, including experience of leading moderation at national level for the exam board, so we really can provide the best possible advice for success.





"All students receive highly effective personalised careers information and guidance."

*Ofsted Outstanding (March 2023)*

## Life after MV16

Discover your future.

At MV16, we are expert at providing bespoke advice and guidance to help you determine your next step. We have extensive links with employers and universities and every year we hold an employer fair which over fifty exhibitors attend.

We are proud of our students' success in securing places on competitive degree apprenticeships, including Dyson, Mars, Samworth Brothers, JCB, KPMG, and Price Waterhouse Coopers.

For those of you who plan to go on to university after your A-Levels, we are expert at helping with that too. One of just six Unifrog champions in the country, in recognition of the extensive support that we provide to students through its use, we offer individualised guidance with your UCAS applications.

Our alumni mentoring programme is unique in the sector. Currently over 60 alumni are matched with Year 12 students to provide support and advice with their chosen progression route.

Students are matched with an alumni who is working or studying in the student's chosen field.

This exceptional programme was recognised by the Sixth Form College Association Awards, achieving first place in the Enrichment and Employability category.



### Winners of Enrichment and Employability Award

In recognition of the MV's extensive alumni engagement programme, which matches past students with current students according to career goals, to provide mentorship and advice with applications and onward progression.



# MV community

## Discover your voice.

At MV, we are small enough to foster excellent community spirit. We are proud of the tolerant and inclusive environment that defines the experience here at MV, with our students taking an active part in shaping their college, through formal means such as inclusivity forum or form reps, or informally through lunches with the Head Teacher.

Our catering team are a central part of the community and often theme their menu according to the celebrations taking place.

At the end of every half-term an open-mic is held where students and staff come together to perform and the Year 13 leavers' prom is a highlight of the summer term.



Celebrating  
Pride 2023





# Support services

Monty the therapy dog on one of his regular visits to MV16



**Taking the step up to sixth form is exciting but we recognise that it can also be challenging at times. Our experienced and caring staff are available to provide advice and support whenever you might need assistance.**

## Wellbeing

Our dedicated Safeguarding and Welfare Officer is available whenever you need a listening ear. This may take the form of a quick catch up at the beginning of the day, or a more tailored regular support session if you need time to talk through your concerns.

Our newest addition to our wellbeing team is Monty the Golden Retriever. Monty is a registered therapy dog and will be making guest appearances on a regular basis!

## Student Wellbeing Ambassadors

Our Student Wellbeing Ambassadors have been trained by Access All Areas. They wear a pink and gold lanyard and are available for students to drop in for a chat about anything that may be bothering them. They have their own office in a quiet part of the college to provide a listening ear.

## SEND Support

First and foremost our SEND team provide assistance for students with special educational needs but they never turn anyone away from their door and frequently build strong relationships with other students, looking out for their welfare where needed.

Next to their baseroom is a suite of quiet working rooms that are available for them to work one to one with students, or for students to retreat to for some quiet working if they need a break from the hustle and bustle of the college. Students with Education and Health Care Plans will have a dedicated key worker from the team. Our SENCO works with all teaching staff to develop teaching & learning to ensure that lessons are inclusive for all students, irrespective of their needs.

## Supported Study

We recognise that not all students adjust to the demands of advanced learning as quickly as others. Members of the teaching staff have time allocated in their week to support students who have been identified as needing some supervised study sessions, to help them prioritise their learning and assist in developing their organisation and time management skills.

## Accessibility

The college is committed to meeting the needs of people with disabilities and recognises that a disability can affect people in different ways. We encourage you to let us know when you apply to us so that we can discuss how best to support you.



# How we can help

The 16 to 19 Bursary Fund provides financial support to help students overcome the specific financial barriers to participation they face so they can remain in education.

This policy should be read in conjunction with the government's 16 to 19 bursary fund guide.

## There are two types of 16 to 19 bursaries:

Bursaries for defined vulnerable groups of up to £1,200 a year

Discretionary bursaries which institutions award using policies they set, in line with the ESFA funding rules

## Who is eligible for 16-19 Bursary Funding?

### All bursaries

For both types of bursary, students must meet the eligibility criteria set out in paragraph 3 of the ESFA 16 to 19 Bursary Fund guide 2023 to 2024 academic year.

### Bursaries for young people in defined vulnerable groups

For vulnerable groups bursary, students must meet the eligibility criteria set out in paragraph 4 of the ESFA 16 to 19 Bursary Fund guide 2023 to 2024 academic year

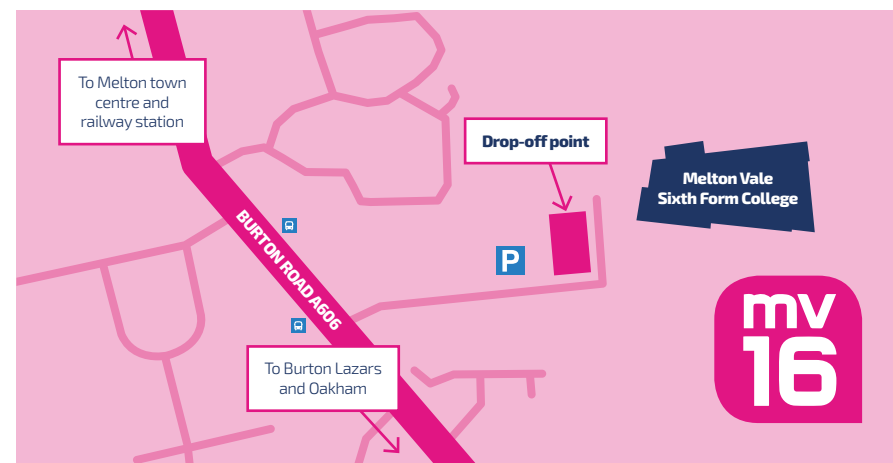
### Discretionary bursaries

The ESFA permit institutions to set their own eligibility criteria for discretionary bursaries. In all instances, even where you meet the criteria below, the award is based on actual financial need. Students must explicitly set out their needs at application stage.

### Free School Meals

When you start at MV16, you will need to reapply to Leicestershire County Council if you were entitled to Free School Meals at your previous school — this will continue whilst we await formal confirmation of the entitlement.

# How to get to us



## By bus

MV16 is well connected with surrounding towns and rural communities by public bus networks. These are public routes operated by Arriva and Centrebus. See our website for links to the timetables.

Please contact the service providers if you have any issues with the buses.

## By car

If you are traveling by car, you can plan your route online. Please use the postcode LE13 1DN.

For safety reasons, if you are being dropped off, you must use the drop-off point in the main car park at the front of the college.

The main college car park is manned in the morning and afternoons, students must display a parking permit to be admitted in and permits are available from Reception. Students should park in the MV marked bays in the front car park. Disabled parking is available at the front of the building.

## By rail

Melton Mowbray station has direct rail links to Oakham, Stamford and Leicester. Visit our website to check times and availability.

When you exit the station, walk past the council offices then turn right, walk over the footbridge and up Burton Road. MV16 is at the top of this road, approximately 20 minutes walk away.

## Help with transport costs

Each local authority has a policy setting out how they support post-16 students with the costs of transport. Please refer to your local authority's website for more details.

Additionally if you can demonstrate a financial need you may be able to get support from the MV16 bursary fund, see our website for more information.



# How to apply

We understand that choosing the right college is a very difficult decision — we would encourage you to come and meet us before making a final decision.

The Head Teacher or one of the leadership team is always available to meet you.

By meeting one of the team, you can talk through any questions you might have and we can provide you with all the latest

news regarding the exciting enrichment activities that makes MV16 such a unique college.

The actual application process for a Year 12 place at MV16 is very straightforward. You can apply directly for Year 12 places through our website by scanning the QR code opposite with your smartphone.

We look forward to hearing from you soon.

## General college entry requirements

In order to study A-Levels at MV16, you need to have achieved a grade 4 or above in both GCSE Mathematics and English, plus three other GCSE or equivalent qualifications at grade 5 or above.

## Subject-specific entry requirements

Subject	Entry requirements
A-Level Sciences	Minimum grade 6 in a related science subject
A-Level Economics	Minimum grade 6 in GCSE Mathematics
A-Level Computer Science	Minimum grade 6 in GCSE Mathematics
A-Level Mathematics	Minimum grade 6 or above in GCSE Mathematics
A-Level Further Mathematics	Minimum grade 7 or above in GCSE Mathematics
A-Level English Literature	Minimum grade 6 in GCSE English Literature
A-Level French or Spanish	Minimum grade 6 in the language you wish to study
A-Level PE	You should be competing at club level or above for the coursework component

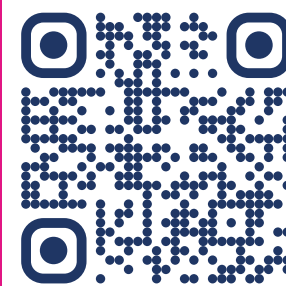
All other subjects require the general college entry requirements only.

## Apply online

We are currently accepting applications for September for Year 12 students. You can apply for a place at MV16 directly through our website:

[mv16.org.uk/apply](https://mv16.org.uk/apply)

If you have any queries regarding the application process, please email [admissions@mv16.org.uk](mailto:admissions@mv16.org.uk).







## Melton Vale Sixth Form College

Burton Road  
Melton Mowbray  
Leicestershire  
LE13 1DN

Executive Head Teacher:

**Sandy Paley** BSc (Hons), PGCE, MEd

Head Teacher:

**Nicki Dartnell** BSc (Hons), PhD, PGCE



**01664 504750**



**contactus@mv16.org.uk**



**mv16.org.uk**



**meltonvale**

